



# The Planning Process: Why the Time is Now

Karen Hill Scott, Ed.D., KHS & Company





# Apprehend the Moment

## Bring the Future to the Present



- **Public interest is high**
  - Governor will commit to successive years of expansion for State Preschool



- Key investment for lifetime trajectories





# The Purpose of a Local Master Plan

## Retain Focus on “the Main Thing”



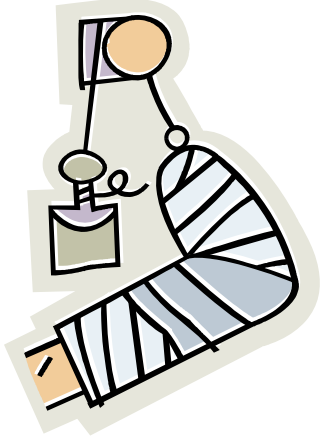
### ■ Implementation of:

- Expansion of capacity
- Quality of Teachers
- Intentionality of Curriculum
- Change in Children’s Performance



# Disjointed Incrementalism

## Classic Policy Model

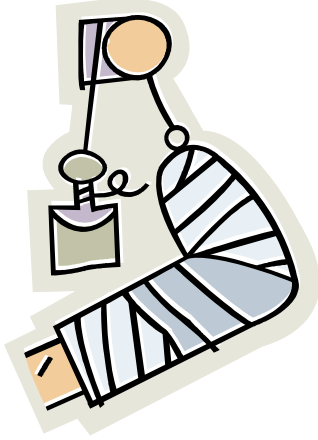


1. Identified and described by Lindblom and Braybrook, (1963)'
2. Sometimes called “muddling through”;
3. Characterized by policy adjustments, rather than systematic overhaul of goals.
4. Accomodation to partisan give and take.



# Disjointed Incrementalism

## Six Characteristics of Prevailing Model



1. focuses only on those policies which differ incrementally from existing policies;
2. small number of policy alternatives are considered;
3. only a restricted number of "important" consequences are evaluated;
4. The problem is continually redefined
5. A "never-ending series of attacks" on the issues at hand
6. Remedial, geared more to the alleviation of imperfections than to the promotion of future goals.



# Conjoined Incrementalism



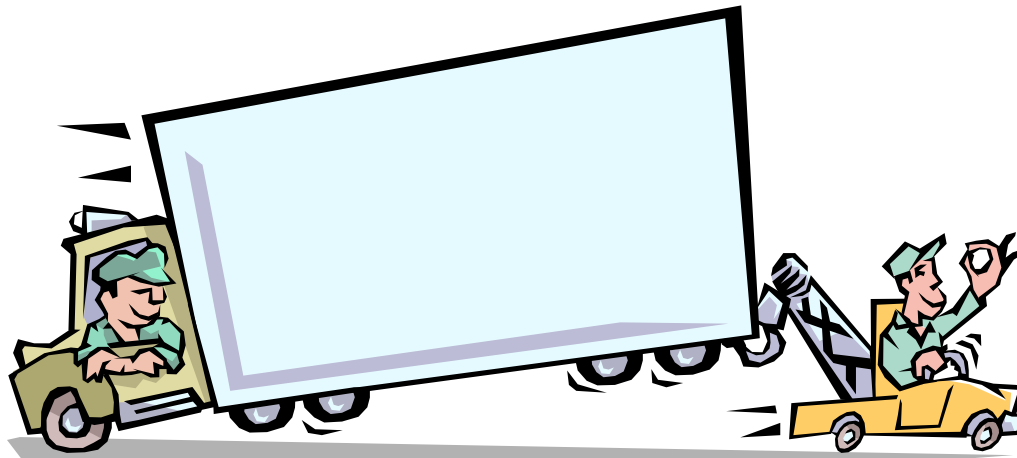
- New Approach to Old Model.
- Join separated pieces together for a common purpose.
- Link each year to the next with INTENTION.
- Use messaging between legislative sessions to promote continuity.





# Conjoined Incrementalism

- **Stealth Approach**
  - Aligned and Coordinated across counties
  - Requires inter-County communication toward a shared State goal (through CCSESA or lead agency)



- **Impound the Old Model**





# Our Organizational Framework



## ■ Overview (Day 1)

## ■ Standardization: Shared Goals

## ■ Custom Finishes: (Day 2)

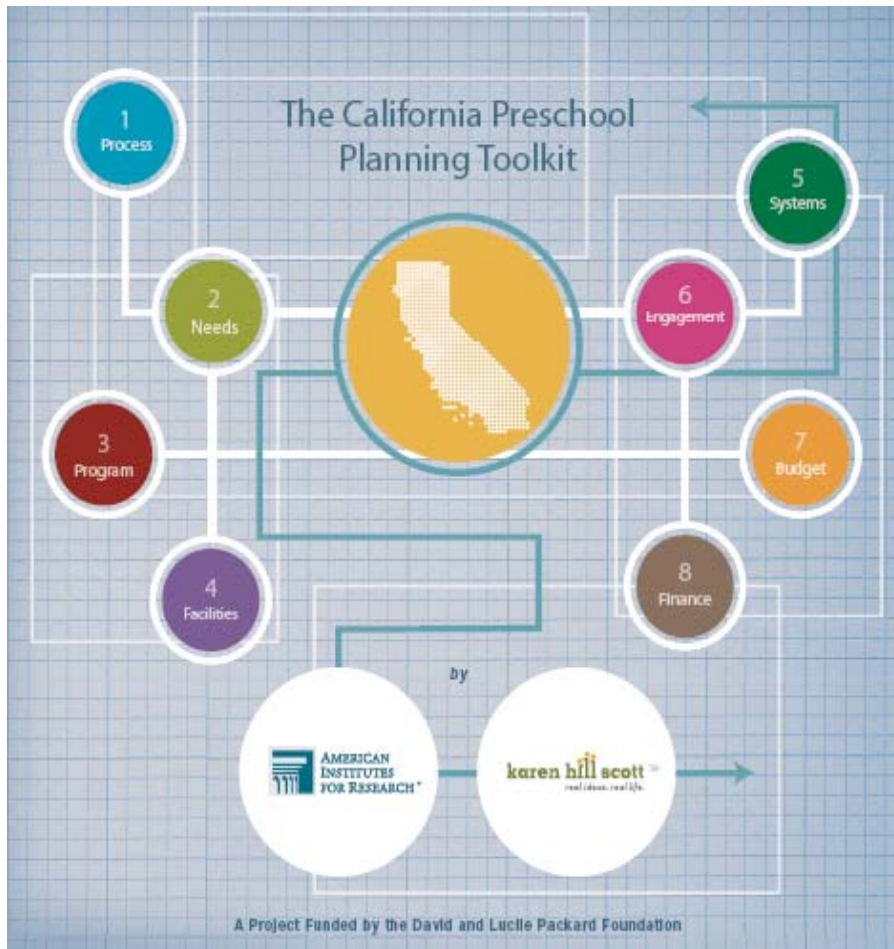
- Unique County Attributes
- County “signatures”

- Use a planning process as the “envelope” for your work
  - Create a coalition of stakeholders to develop the plan
  - Treat the completed plan as your blueprint for action
- Develop content reports for specific guidance on each component of plan
- County-Specific Planning Materials & Action Steps





# The Preschool Planning Toolkit



*Break!*

